

Corinth Spec Building

2201 S. Fulton Dr.
Corinth, Mississippi 38834



AVAILABLE



Building Size: 50,000 sf PEMB expandable to 300,000 sf
Pad ready for 100,000 sf

Bays: 100' x 250'

Lot Size: 25 acres

Ceiling Height: 30' clear height

Floors: 6" stone base for future concrete slab

Columns: Center row of columns at 50' centers

Lights: TBD

Ventilation: TBD

Docks: 9 potential dock positions

Drive-In Door: 1

Gas: Corinth Gas & Water

Power: Alcorn County Electric Power Association

Water: Corinth Gas & Water

Sewer: Corinth Sewer Department

Data/Fiber: ACE Fiber

Rail: Kansas City Southern Railway

Transportation: U.S. Highway 72
U.S. Highway 45
I-22 (47 miles)

For More Information Contact:

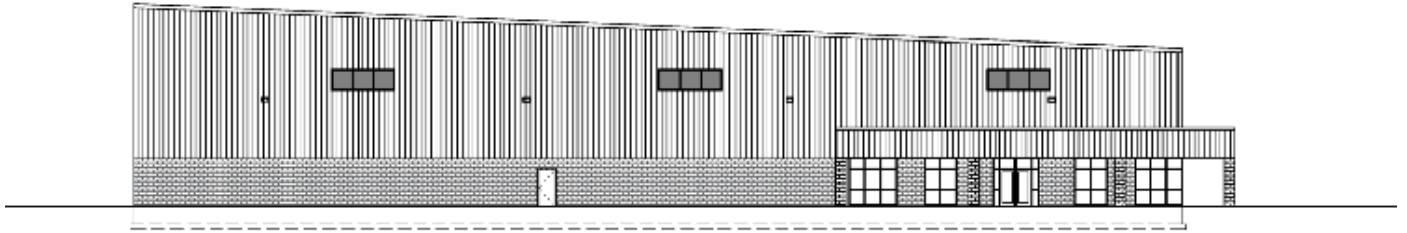


Clayton Stanley - President/COO
The Alliance
502 Wick St.
Corinth, MS 38834
Cell: 662.287.5269 • www.corinthalliance.com

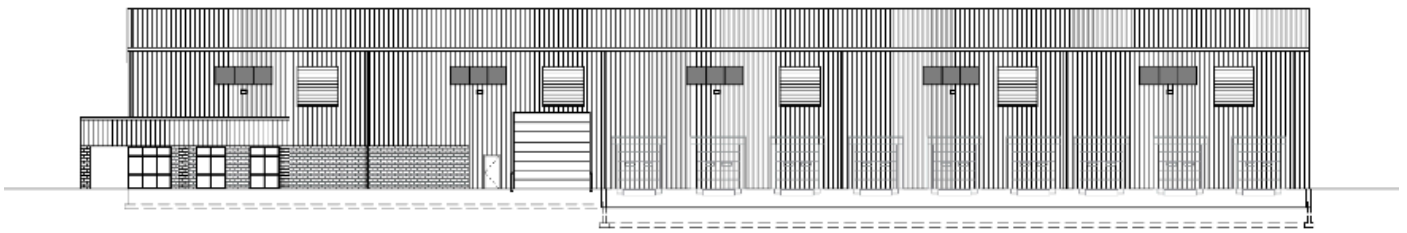


Clayton McKinnon - Regional Development Director
P.O. Box 660864
Birmingham, AL 35266
cmckinnon@agracel.com
Cell: 205.447.0784 • www.agracel.com

Building Elevations



EXTERIOR ELEVATIONS - WEST



EXTERIOR ELEVATIONS - SOUTH

Site Location

